

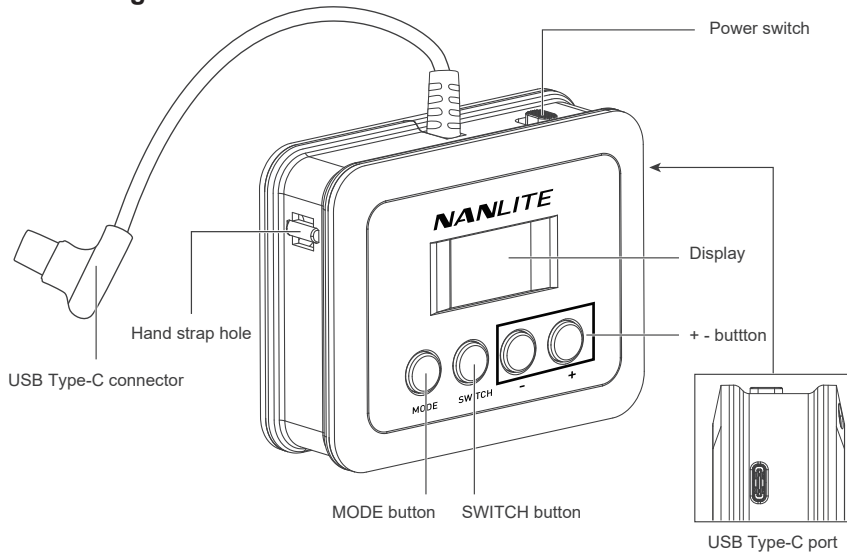
NANLITE

WC-USBC-C1
USER MANUAL

Guangdong NanGuang Photo&Video Systems Co., Ltd

WC-USBC-C1 Wire Controller

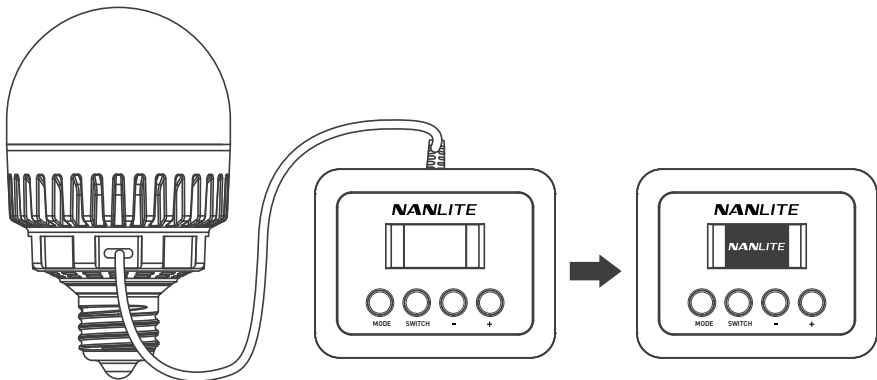
Product Diagram



WC-USBC-C1 wire controller is compatible with PavoBulb 10C and PavoTube T8-7X.

Usage

1. Connect the wire controller to the fixture, then toggle the power switch to turn on the wire controller, the "NANLITE" logo will be displayed on start up.



2. When the wire controller is connected to the fixture, the wire controller will first read the information of the fixture, including the address and fixture model.
- ① When the wire controller is not connected to the fixture, the display will show "Disconnected" (As shown in figure 1);
 - ② When the wire controller is connected to the fixture, the screen will display the corresponding lighting mode interface or menu of the fixture. (As shown in figure 2)

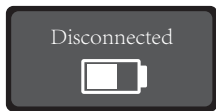


figure 1

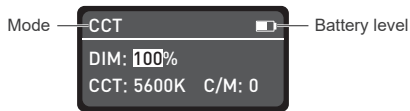
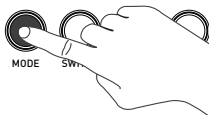


figure 2

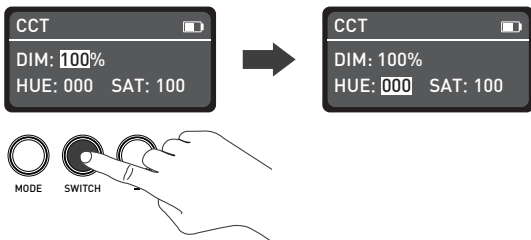
Note: (1) When the wire controller is connected to PavoBulb 10C, the lighting mode options including CCT, HSI and EFFECT.

(1) When the wire controller is connected to PavoTubeT8-7X, the lighting mode options including CCT, HSI, EFFECT, PIXEL FX.

3. MODE button: For switching lighting modes and menu.



4. SWITCH button: For switching corresponding options under different light modes, or to switch the channel, language, DMX mode, DMX pixel (only for PavoTube T8-7X), wireless protocol (only for PavoBulb 10C), Bluetooth reset, firmware update and version under the menu options.



5. + - button: For adjusting the value of the corresponding options under the lighting mode. (As shown in figure 3)

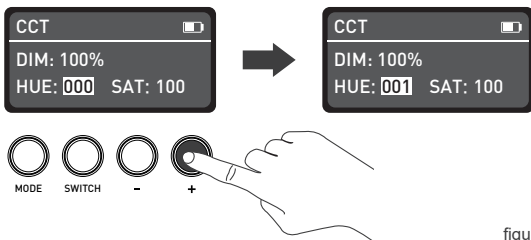
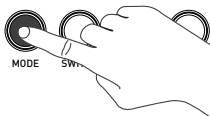
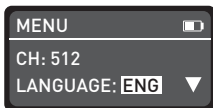
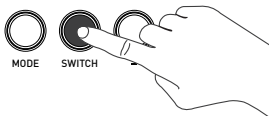
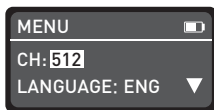
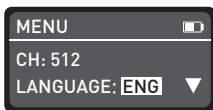


figure 3

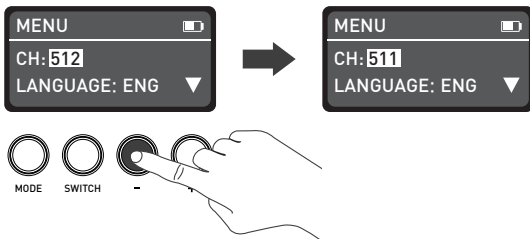
6. Press MODE button to enter the menu.



① Channel (address code) setting

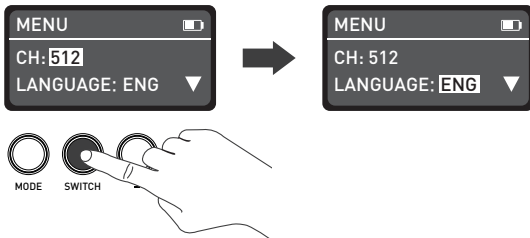


Press SWITCH button to CH.

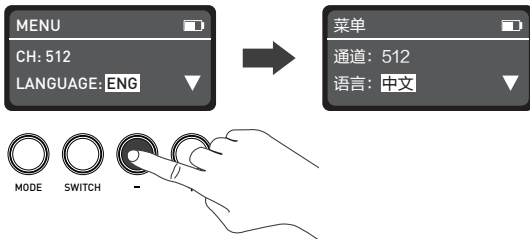


Press + - button to adjust the value of the address code.

② Language setting

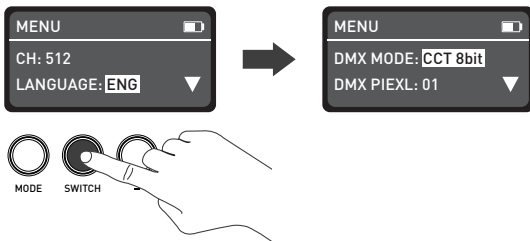


Press SWITCH button to LANGUAGE.

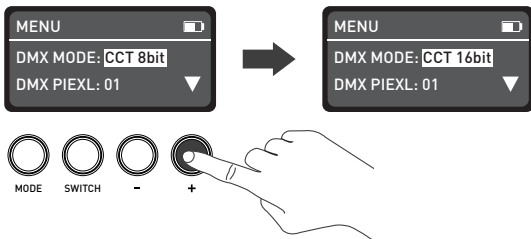


Press + - button to select Chinese or English.

③ DMX mode setting

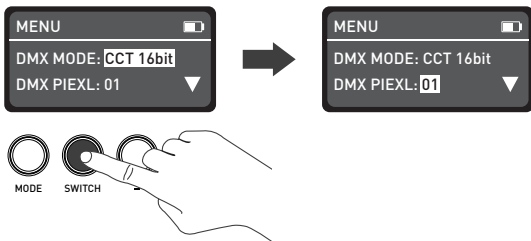


Press SWITCH button to DMX MODE.

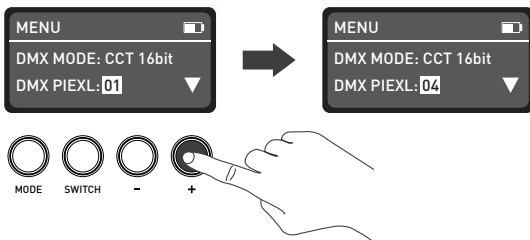


Press + - button to select the desired DMX mode.

④ DMX PIXEL setting (Note: Only controllable with PavoTube T8-7X.)

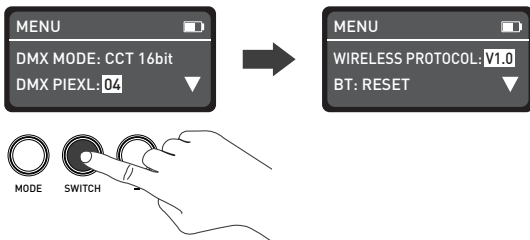


Press SWITCH button to DMX PIXEL.

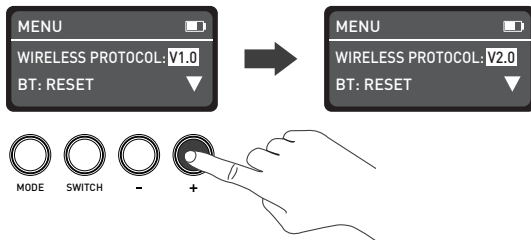


Press + - button to adjust the number of DMX pixels.

⑤ Wireless protocol setting (Note: Only controllable with PavoBulb 10C.)

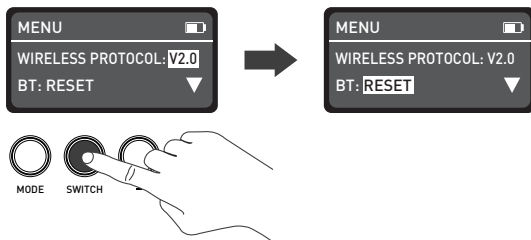


Press SWITCH button to WIRELESS PROTOCOL.

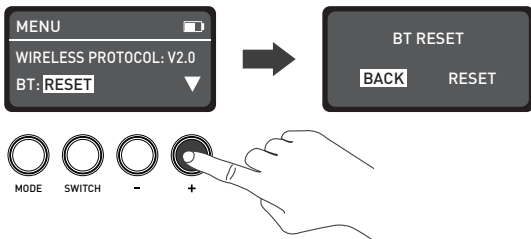


Press + - button to select V1.0 or V2.0.

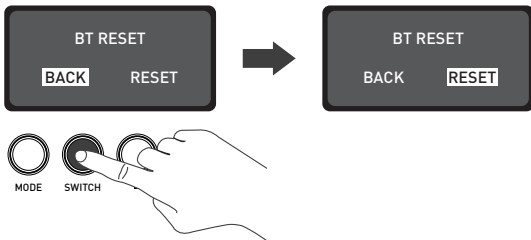
⑥ Bluetooth Reset



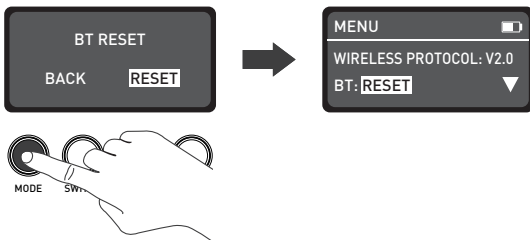
Press SWITCH button to BT.



Press + - button to enter the interface of bluetooth reset.



Press SWITCH button to RESET.

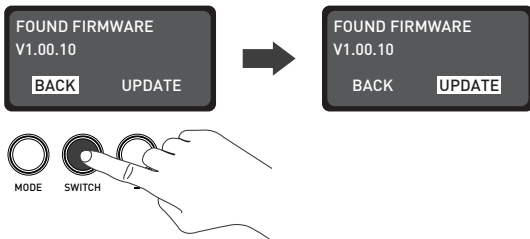


Press MODE button to confirm reset and it will return to the menu interface after resetting the bluetooth.

⑦ Firmware update

(1) Firmware update for the wire controller

Switch off the the wire controller, and then insert the USB flash drive with the new firmware for wire controller, the screen will show as below:



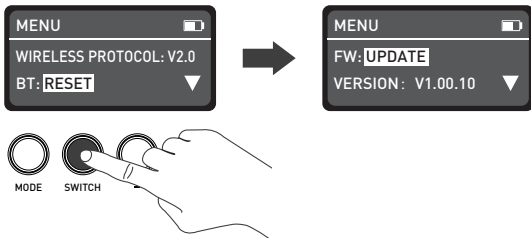
Press SWITCH button to UPDATE.



Press MODE button to confirm the update, it will prompt "FIRMWARE UPDATED" after the firmware is upgraded.

(2) Firmware update for fixtures via wire controller

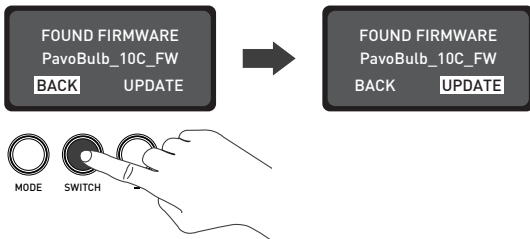
Switch on the controller and connect it to the fixture to be upgraded, insert the USB flash drive with the new firmware of the fixture, turn on the fixture, then press the MODE button to switch to the menu interface.



In the menu, press the SWITCH button to firmware update.



Press + - button to enter the firmware update interface.

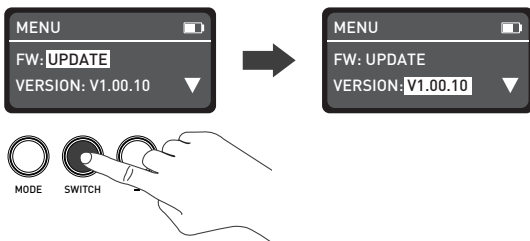


Press SWITCH button to UPDATE.



Press MODE button to confirm the update, it will prompt "FIRMWARE UPDATED" after the firmware is upgraded.



⑧ Version



Press SWITCH button to VERSION.

7. USB Type C port: For firmware updates, or connect with the USB cable, and then connect to the USB adapter with an output of 5V/2A or above to charge the wire controller.
8. The wire controller has a built-in lithium battery and can power the PavoBulb 10C and PavoTube T8-7X directly.
9. Please switch off the controller when not in use.


Notice

1. The wire controller is only compatible with PavoBulb 10C and PavoTube T8-7X.
2. When the battery level is low, it is recommended to reduce the brightness to less than 50% for charging, or turn it off and fully charge before using again.
3. When the wire controller is not connected to the fixture and is powered off, connect the power supply, now the display will show "  " and icon is scrolling; when the battery is fully charged, the display shows "  ".

This manual has been compiled according to the rigorous testing of our company's products. Product designs are subject to change without prior notice. You can download the latest version of the manual for this particular product from www.nanlite.com.

Version: V2 2022-02-16

NANLITE

 +86-754-85751187

 +86-754-85300887

 service@nanlite.com

 Zhanglin,324,Dongli Chenghai Shantou Guangdong China

www.nanlite.com